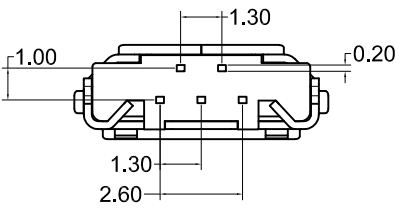
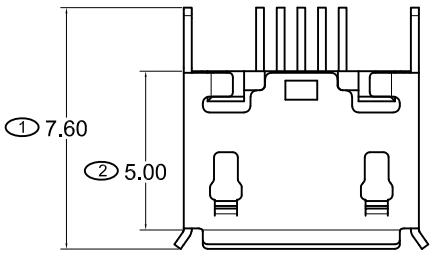


1 2 3 4 5 6 7 8 9

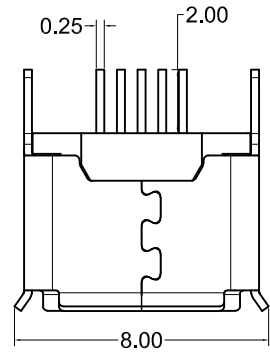
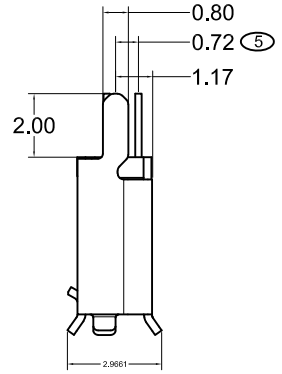
A



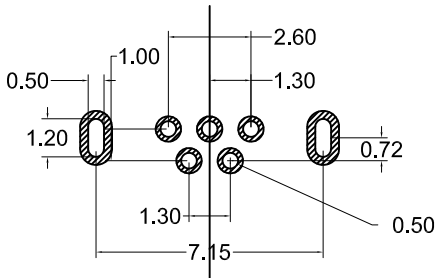
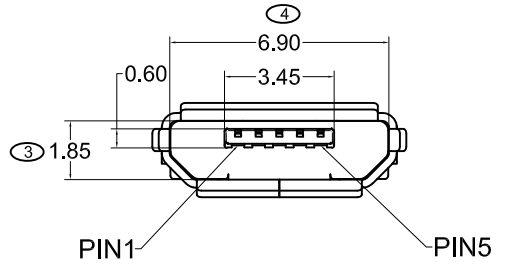
B



C



D



RECOMMENDED PCB LAYOUT  
TOLERANCE: ±0.05

NOTES:

1. MATERIAL:
  - 1.1 HOUSING:LCP
  - 1.2 CONTACT:COPPERY ALLOY T=0.20MM
  - 1.3 SHELL: SUS201 T=0.25MM
2. FINISH:
  - 2.1 CONTACT:
    - 1U"MIN,PLATED ON CONTACT AREA
    - G/F PLATING ON SOLDER TAIL AREA
    - 50~80U" NICKEL UNDERPLATING OVERALL
  - 2.2 SHELL:
    - 80~120U" MATTER TIN PLAING ALL
    - 50~80U" NICKEL UNDERPLATING OVERALL
3. SPECIFICATION:
  - 3.1 CURRENT RATING:0.5A(2.3.4CONTACT)/1.8A (1.5CONTACT)MAX.
  - 3.2 VOLTAGE:30 VAC
  - 3.3 TEMPERATURE RANGE:-20°C~85°C
  - 3.4 CONTACT RESISTANCE:30 MILLIONHM MAX.
  - 3.5 DIELECTRIC WITHSTANDING VOLTAGE;250VAC R.M.S
  - 3.6 INSULATION RESISTNACE:100 MEGOHMS MIN

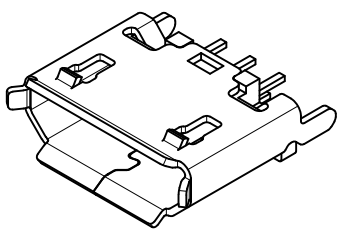
※ SIGN "X" IS IMPORTANCE DIMENSION

Order Information:

KMR1 - MD 05 S D X X X - 039F  
① ② ③ ④ ⑤ ⑥ ⑦ ⑧

- |               |          |                   |                 |
|---------------|----------|-------------------|-----------------|
| ①:Assy        | ⑤:Style  | ⑦>Contact plating | ⑧:Shell plating |
| ②:Series No.  | M: Smt   | 1: 1u"            | T: Tin          |
| ③:Contact No. | D: Dip   | 2: 3u"            | N: Nickel       |
| 05: 5 pos.    | ⑥:Color  | 3: 5u"            |                 |
| ④:P: Plug     | B: Black | 4: 15u"           |                 |
| S: Socket     | W: White | 5: 30u"           |                 |

E



**KEM 奇速科技有限公司**  
Qi-Speed Technology CO., LTD.

產品名稱:  
PRODUCT NAME  
MICRO 5PIN 180度直插

F

單位: mm	繪圖	設計	審核	核准
比例:	DRAWING	DESIGNED	CHECKED BY	APPROVAL BY
公差: .X ±0.38	JOHNY	JOHNY	LUKE	JAMES
.XX ±0.25				
.XXX ±0.13				
日期: 2017/3/3	版本	修改事項	修改日期	

料號:KMR1-MD05SDXXX-039F
PART NUMBER
圖號:KMR1-MD05SDXXX-039F-1
DRAWING NO
版本: REV. 0

料號:KMR1-MD05SDXXX-039F
PART NUMBER
圖號:KMR1-MD05SDXXX-039F-1
DRAWING NO
版本: REV. 0

1 2 3 4 5 6 7 8 9